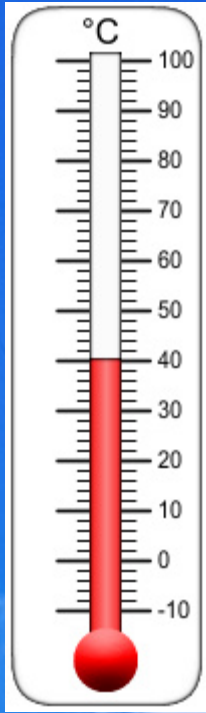


**Temperature:
50° - 60°**



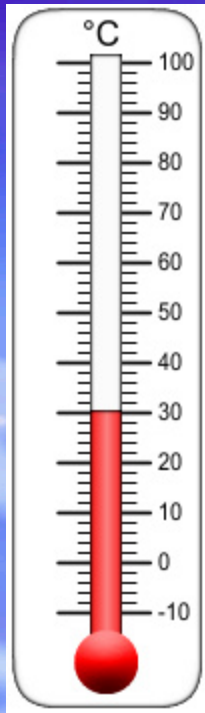
**You should wear:
long sleeves and pants**



**Temperature:
50° - 33°**



You should wear:
coat and pants

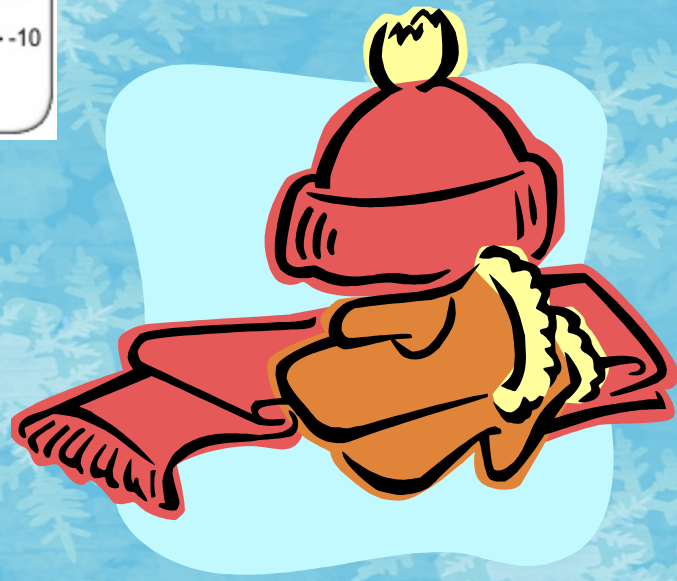
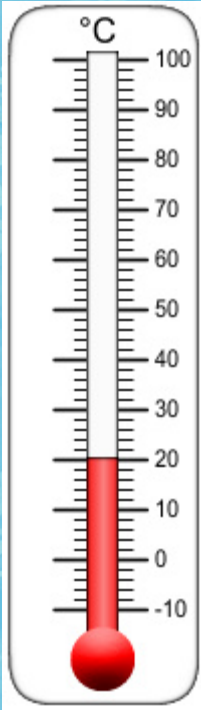


**Temperature:
32° and below**



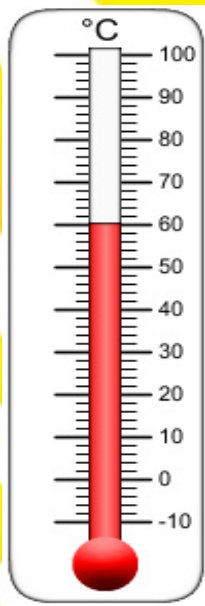
You should wear:
winter coat, hat, gloves

When there is snow

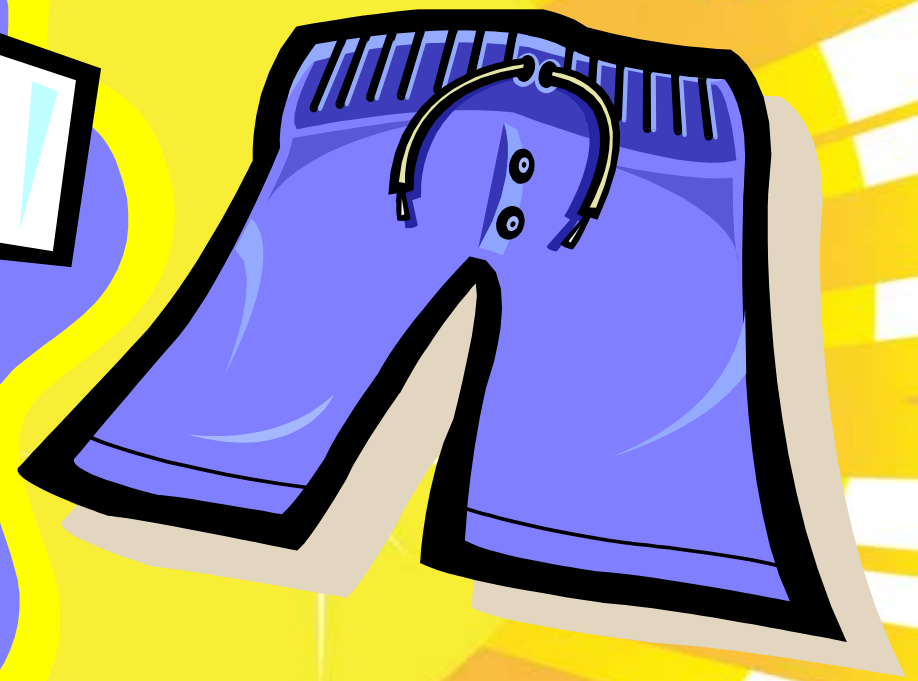


You need to wear:

winter coat, hat, gloves, snow pants, and boots



**Temperature:
60° and above**



You can wear:

T-shirts and shorts