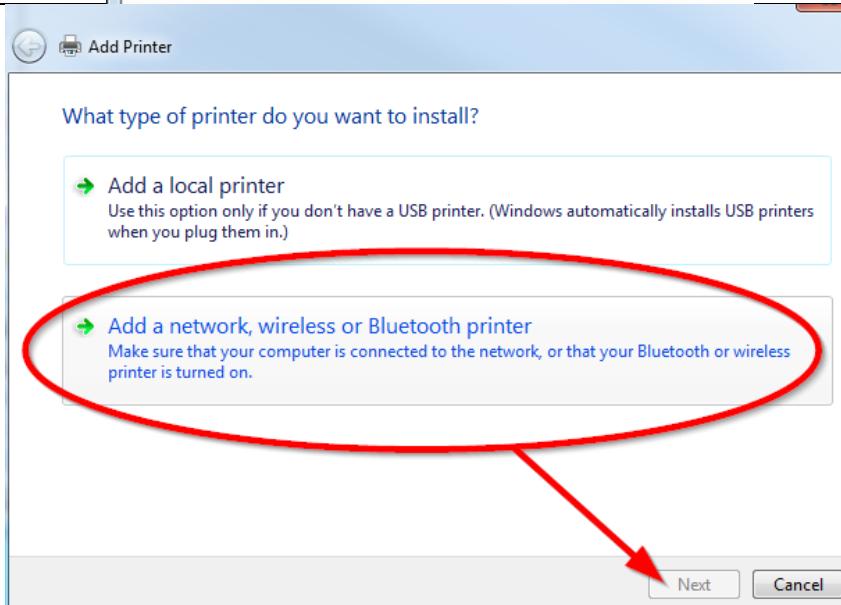
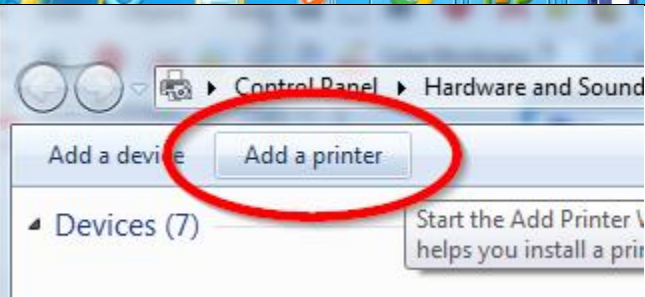
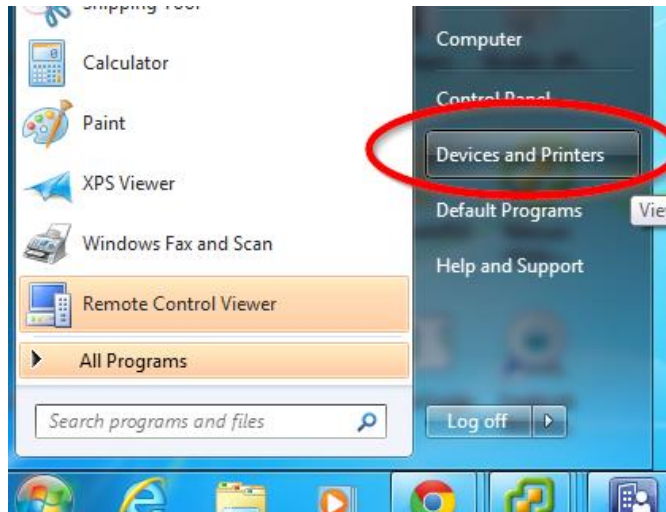


How To Add A Printer To Your Computer.



How To Add A Printer To Your Computer.

Select a printer

1. Click on the "Printer Name" header to sort A-Z

Printer Name	Address
DoCindy on PRINTERS	Cindy's Office
DoColor on PRINTERS	District Office
DoCopierBw on PRINTERS	District Office
EsAngieRoom on PRINTERS	ES Angie's Classroom
EsLoungeColor on PRINTERS	ES Lounge
EsLoungeCopierBw on PRINTERS	ES Lounge
EsOffice on PRINTERS	ES Office
EsOfficeCopierBw on PRINTERS	ES Office Copier BW

Search again

→ The printer that I want isn't listed

2. Scroll to find the printer you want to add to your computer.

3. Click to add the printer.

4. Next

Cancel

Address

Windows Printer Installation

Connecting to EsLoungeColor on PRINTERS

Downloading the driver...

Cancel

Add Printer

You've successfully added EsLoungeColor on PRINTERS

Printer name: EsLoungeColor on PRINTERS

This printer has been installed with the RICOH PCL6 UniversalDriver V4.6 driver.

Next

Cancel

Add Printer

You've successfully added EsLoungeColor on PRINTERS

To check if your printer is working properly, or to see troubleshooting information for the printer, print a test page.

Print a test page

Finish

Cancel